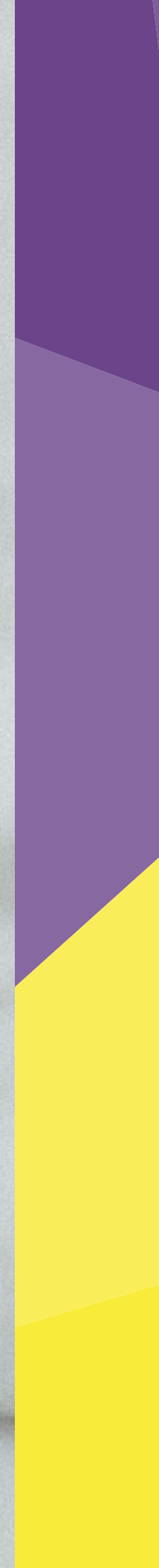


STRONGER  
Together



# 2020

## ANNUAL REPORT



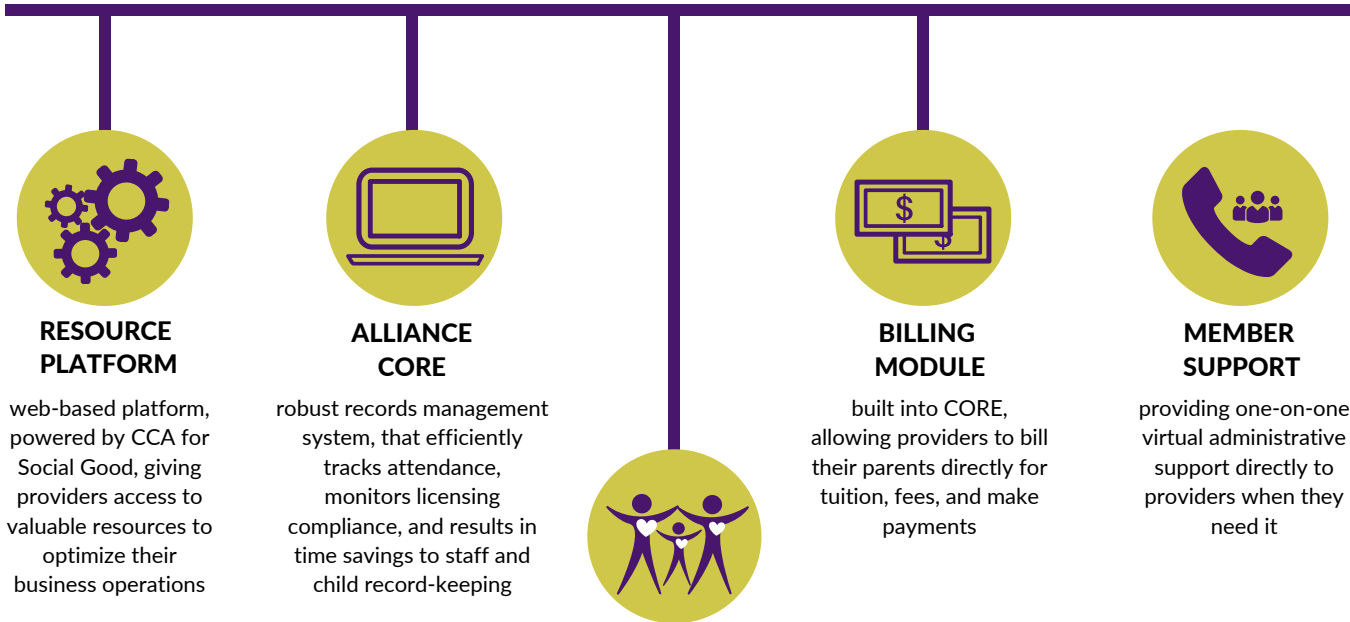
## Our Mission:

Early Learning Ventures (ELV) is a non profit organization dedicated to expanding access to quality, affordable child care. The organization focuses its efforts on improving the quality of child care programming offered at center and family child care homes across Colorado - 85% of which are small, independent businesses that lack the infrastructure and resources to invest in quality improvements.

Judy Williams  
Executive Director  
jwilliams@earlylearningventures.org  
(303) 789-2664 x225

# Stronger Businesses

Operating as a partner, **not** a product, we provide virtual administrative support services, and improved regulatory compliance. This saves child care providers time and money, thus building their capacity to deliver higher quality care and education.



## RESOURCE PLATFORM

web-based platform, powered by CCA for Social Good, giving providers access to valuable resources to optimize their business operations

## ALLIANCE CORE

robust records management system, that efficiently tracks attendance, monitors licensing compliance, and results in time savings to staff and child record-keeping

## BILLING MODULE

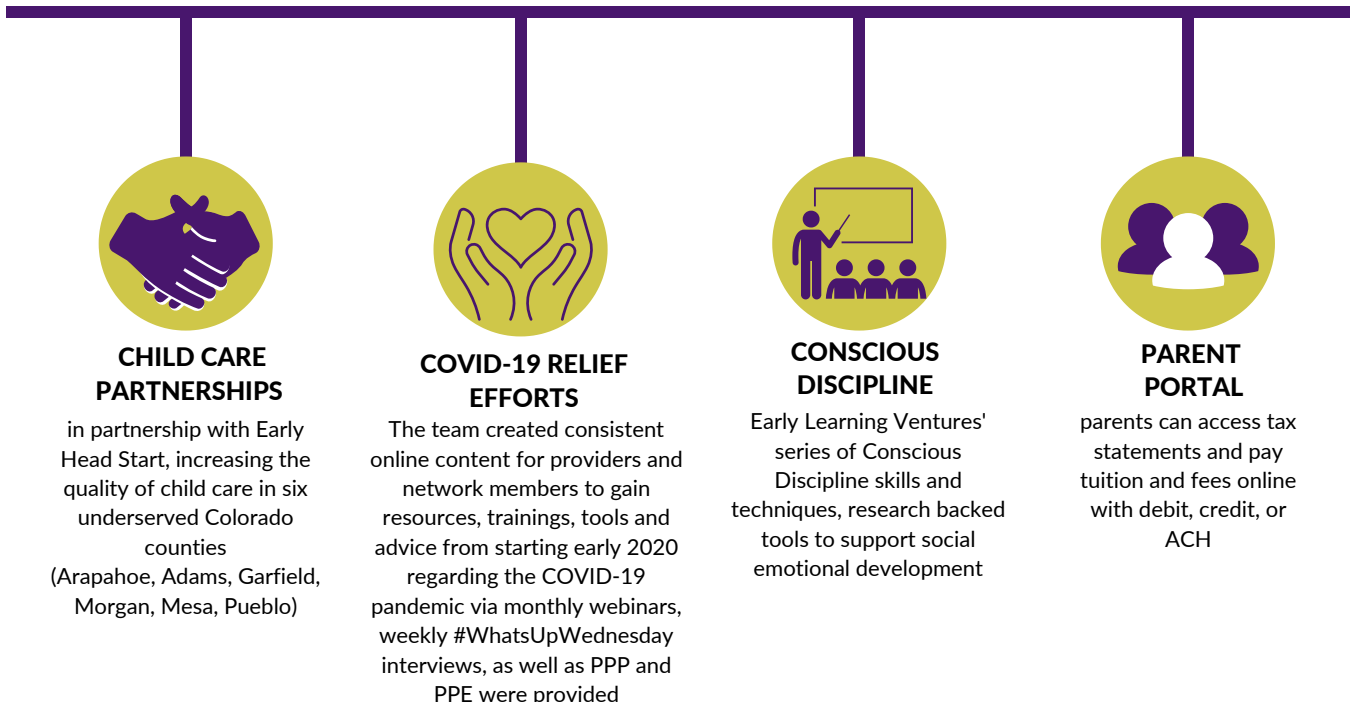
built into CORE, allowing providers to bill their parents directly for tuition, fees, and make payments

## MEMBER SUPPORT

providing one-on-one virtual administrative support directly to providers when they need it

# Stronger Families

Working hand-in-hand with providers and families to bring enhanced services and resources directly to the learning environments to ensure all children reach their full potential.



## CHILD CARE PARTNERSHIPS

in partnership with Early Head Start, increasing the quality of child care in six underserved Colorado counties (Arapahoe, Adams, Garfield, Morgan, Mesa, Pueblo)

## COVID-19 RELIEF EFFORTS

The team created consistent online content for providers and network members to gain resources, trainings, tools and advice from starting early 2020 regarding the COVID-19 pandemic via monthly webinars, weekly #WhatsUpWednesday interviews, as well as PPP and PPE were provided

## CONSCIOUS DISCIPLINE

Early Learning Ventures' series of Conscious Discipline skills and techniques, research backed tools to support social emotional development

## PARENT PORTAL

parents can access tax statements and pay tuition and fees online with debit, credit, or ACH

# Strengthening the Business of Child Care



# 2020 ELV BY THE NUMBERS



**45,068**

CHILDREN SERVED



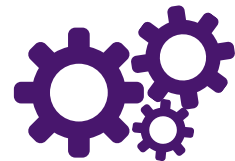
**315**

ALLIANCE CORE USERS



**614**

LICENSED EARLY  
LEARNING PROGRAMS  
SERVED



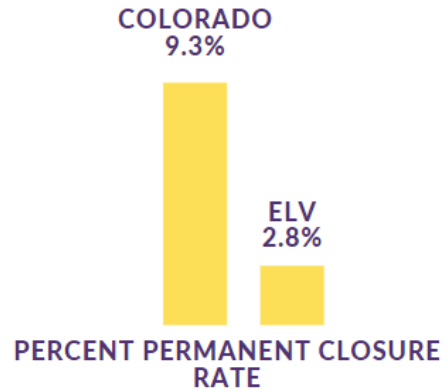
**1,215**

RESOURCE PLATFORM  
USERS

Early Learning Ventures  
elvclientsupport@earlylearningventures.org  
www.earlylearningventures.org  
(844) 293-2820

# COVID Mini Grants & 2020 Year In Review

**Child Care Providers in the ELV Network were more than 3 times as likely to stay open during the Pandemic.**



**\$300K**

Total COVID relief funding that was awarded to ELV to support EHS partners

**\$45K**

Total cost covered in Alliance CORE affiliate fees over 3 months

**\$19K**

Total in food support sent to 243 families including 11,000 children

**\$35K**

In grant funding provided rent and utilities support to 37 families

**\$4-18K**

Award funding range that ELV was able to help partners with

**32**

Online videos made sharing resources and tips

**386**

Total masks were sent to operating providers

**90**

Total thermometers were given to ELV providers



Touchless Sign in Technology funding was provided



Delivery of cleaning supplies and PPE



Enhancements were made to outdoor learning environments and ventilation



ELV assisted with COVID Revenue Relief for sites



Partners and Families received support based on pandemic-related hardship

# Early Head Start Child Care Partnerships



489

EHS - ELIGIBLE INFANTS/TODDLERS  
& THEIR FAMILIES SERVED

97.48%

AVERAGE MONTHLY  
ENROLLMENT (% OF FUNDED  
ENROLLMENT)

## PERCENTAGE OF ELIGIBLE CHILDREN SERVED\*

Arapahoe County: 3.2%

Garfield County: 11%

Mesa County: 7.5%

Morgan County: 4.2%

Pueblo County: 3.3%

View Office of Head Start  
Monitoring Review Report [here](#)



Tim E. Garcia  
Child Care Partnerships Director  
tgarcia@earlylearningventures.org  
P: 303-789-2664 X232

# Efforts to Prepare Children for Kindergarten

One of the many Professional Development Resources that are available to ELV Partnership sites is the Head Start Early Learning Outcomes Framework. We support teachers in understanding this framework as well as using the app. on their phones or digital devices to support Framework implementation and measuring progress of the young learners in their care in the following developmental areas: Cognitive , Social and Emotional, Language and Literacy, Physical and Approaches to learning. The intention is to help support teachers' awareness of the developmental progression of what young learners are beginning to do and what they will be able to do as they learn and grow in their learning environments.

## **98% of children have had health exams and 14% of children have had dental exams.**

ELV supports teachers by providing professional development opportunities related to family engagement and empowerment by ensuring that teachers respect and understand that families are their child's first teacher and play an important role in establishing learning goals for individualized young learner success as they are becoming lifelong learners (or school ready). ELV provides teachers with ongoing professional development on Creative Curriculum (for Infants, Toddlers & Twos and Family Child Care), Teaching Strategies Gold online assessment of learning and development, as well as developmental screening using Ages and Stages tools.

ELV uses Coaching as a professional development strategy to support teachers' implementation of these theories into practice by providing one on one and group coaching using the Know, See, Do, Reflect cycle on their practices and (since the Pandemic) support teachers virtually using a Peer-to-peer approach until we can safely resume in-person activity; at which time we may continue using since it has been effective. This professional development strategy allows for teachers to advance their targeted teaching practices so that there is a direct impact on the children in their learning environments both as a group and individually guided by both researched based curriculum implementation and ongoing child assessments.

Group Professional Development activities are performed bi-monthly across all six counties for both child care centers and family child care homes. Within the professional development opportunities we discuss and review videos, strategies, and create plans for the continued growth in child-teacher interactions. This reflective and engaging process allows for teachers and providers to identify what is working and what can be adapted to ensure that young learners' needs are met. These activities influence teachers' knowledge and beliefs that support adjustments in their behavior leading to changes in the way children respond to teacher interactions and thus yielding the outcomes we wish to see in child growth, learning, and development. This is an ongoing cycle that continues throughout the year.

Ty Johnson  
Early Education Manager  
tjohnson@earlylearningventures.org  
P: 303-789-2664 X272



# Community Assessment Summary

Each year, Early Learning Ventures updates their community assessment in order to outline the strengths and needs of ELV EHS service delivery areas to ensure that programming remains responsive. Early Learning Ventures completed their most recent community assessment update in 2020.

In 2020, the minimum wage increased statewide, however, the living wage in each county for one adult and one child remains almost 4 times more than the federal poverty guidelines. The living wage is the hourly rate that an individual in a household must earn to support his or herself and their family. This is important to note since one of the criteria for Head Start enrollment is that a majority of families must fall below the poverty guidelines.

The rates of individuals and especially students experiencing homelessness increased in Arapahoe, Garfield and Mesa Counties in 2019. This indicates a need for increased focus on recruitment of children experiencing homelessness. This can be observed by the steady increase in the percent of children experiencing homelessness we have served over the past few years. In 2018 3% of families served by ELV CCP experienced homelessness. In 2019 the percent of children experiencing homelessness rose to 8%. This fiscal year (2020) 11% of children and families served experienced homelessness. This is something we will continue to monitor and continue building partnerships with appropriate resources in the communities we serve.

Finally, the number of preschool slots increased in all counties within Early Learning Ventures' EHS service delivery area. Arapahoe county received the highest number of preschool slots (559), while Morgan county only increased by 25. Adams, Garfield, Mesa and Pueblo County preschool slots increased between 100 to 460 slots. Despite this small increase, there is still significant need in all ELV EHS service delivery areas for high quality, accessible infant and toddler care. This is particularly evident as we gauge the continued impact of the COVID pandemic on the child care industry in Colorado. We do know via a survey by Early Milestones Colorado that Colorado lost about 9.4% of all licensed child care, this has understandably resulted in impact to access to high quality infant and toddler care.





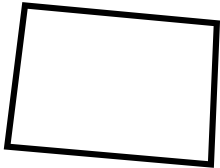
# Family Engagement Activity: Conscious Discipline

Early Learning Ventures' series of Conscious Discipline skills and techniques, research backed tools to support social emotional development.

## Live Web Series



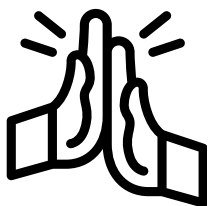
104 participants



9 Colorado counties represented



30% Increase in confidence supporting children's big emotions

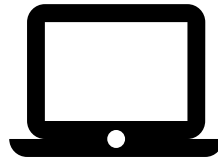


33% increase in participants reporting strategies that work when handling challenging behavior



31% increase in confidence supporting children's social emotional development

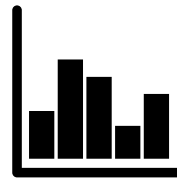
## Self Paced Series



276 participants (so far)



20 Colorado counties represented



Data to follow as the series is concurrently running until October 2021

“There's other ways to parent. It can feel very frustrating to feel like I'm trying and failing.. this gave a new perspective.”

“Such incredibly rich information and absolutely the best and most valuable training I've experienced in years!!”

“This training is life changing.”

# Early Learning Ventures Program Year (PY) 2020 Financials

View Annual Financial Audit Report [here](#)

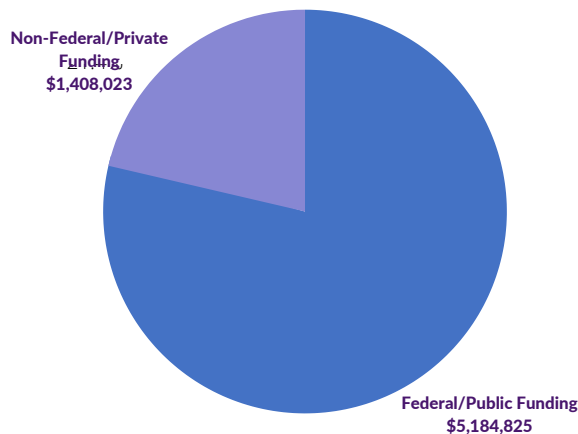
## ELV PY 19-20 Financials

	BUDGET	ACTUALS
Program	\$5,604,820	\$5,745,863
Administration	\$44,119	\$380,524
Fundraising	\$30,000	\$22,728
<b>TOTAL</b>	<b>\$6,078,939</b>	<b>\$6,149,115</b>

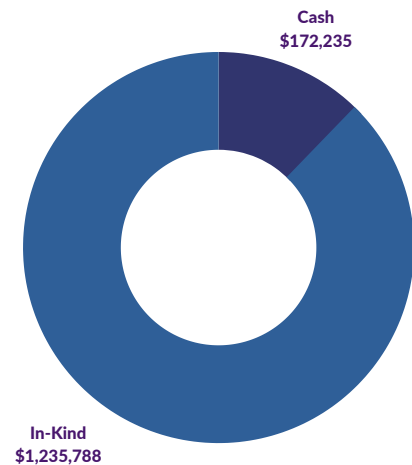
## EHS PY 19-20 Financials

	BUDGET	ACTUALS
Federal	\$5,329,010	\$5,184,825
Non-Federal Share	\$1,332,252	\$1,408,023
<b>TOTAL</b>	<b>\$6,661,262</b>	<b>\$6,592,848</b>
Cash		\$172,235
In-Kind		\$1,235,788
<b>TOTAL</b>		<b>\$1,408,023</b>

Total EHS Program Funding



Non-Federal Share



# EHS - CCP Sites & Counties Served 2019-20

These levels correspond with each Early Head Start's CO Shines rating for their program.

## ARAPAHOE:

Stephanie Olson dba Kid's Castle Level 5  
 New Legacy Charter School\_\_\_\_\_ Level 4  
 Rising Star Early Learning Center Level 4  
 Children's Chalet\_\_\_\_\_ Level 4  
 Shailee's Sunbeams\_\_\_\_\_ Level 3  
 The Baby Haven\_\_\_\_\_ Level 5  
 Bright Academy\_\_\_\_\_ Level 4  
 Infant Toddler Discovery\_\_\_\_\_ Level 4  
 Cribs2Crayons\_\_\_\_\_ Level 3

## ADAMS:

Step by Step CDC\_\_\_\_\_ Level 4  
 Little Boots ELC\_\_\_\_\_ Level 5  
 Bernice Martinez\_\_\_\_\_ Level 4  
 DeeDee Overton\_\_\_\_\_ Level 4  
 Bree Andreen\_\_\_\_\_ Level 4

## MORGAN:

Sarah Neal\_\_\_\_\_ Level 2  
 Donna Araujo\_\_\_\_\_ Level 1  
 Rio Marquez\_\_\_\_\_ Level 4

## GARFIELD:

Caring Kids Preschool\_\_\_\_\_ Level 3  
 Faith Lutheran\_\_\_\_\_ Level 4  
 Fuller Child Care\_\_\_\_\_ Level 4  
 Yampah Mountain Children's  
 Center\_\_\_\_\_ Level 4

## MESA:

Aunt Patty's Child Care\_\_\_\_\_ Level 4  
 Country Care\_\_\_\_\_ Level 4  
 Country Kids\_\_\_\_\_ Level 4  
 Jennifer's Child Care\_\_\_\_\_ Level 4  
 Lil Kurtain Klimbers\_\_\_\_\_ Level 5  
 Lil Peaches\_\_\_\_\_ Level 4  
 Little Imaginations FCCH\_\_\_\_\_ Level 4  
 R5 HS Young Parent Program\_\_\_\_\_ Level 4  
 We Kare-A-Lot Preschool\_\_\_\_\_ Level 2  
 Wishes and Dreams\_\_\_\_\_ Level 4  
 Dana Shepple\_\_\_\_\_ Level 4  
 Landmark Christian Preschool\_\_\_\_\_ Level 3  
 The Learning Tree\_\_\_\_\_ Level 3  
 Little Blossoms\_\_\_\_\_ Level 1

## PUEBLO:

Children's Palace Learning Center\_\_\_ Level 2  
 Southside Childrens Center Prairie\_\_ Level 2  
 Southside Childrens Center Sprague Level 3  
 Kinderkirk Preschool\_\_\_\_\_ Level 3  
 Life Center Academy\_\_\_\_\_ Level 4  
 Yolanda Gonzales\_\_\_\_\_ Level 4  
 Erica's Home Daycare\_\_\_\_\_ Level 4

**Tim Garcia**, *Child Care Partnerships Director*. [tgarcia@earlylearningventures.org](mailto:tgarcia@earlylearningventures.org)  
**Jennifer Garcia Rosendo**, *Family Engagement Manager*. [jgarcia@earlylearningventures.org](mailto:jgarcia@earlylearningventures.org)  
**Ty Johnson**, *Early Education Manager*. [tjohnson@earlylearningventures.org](mailto:tjohnson@earlylearningventures.org)  
**Elsa Sackett Warren**, *Leadership Development Manager*. [esackett@earlylearningventures.org](mailto:esackett@earlylearningventures.org)  
**Kailee Smith**, *Health & Safety Coordinator*. [ksmith@earlylearningventures.org](mailto:ksmith@earlylearningventures.org)  
**Karen Melott**, *Child Care Partnerships Coordinator – Mesa County*. [kmelott@earlylearningventures.org](mailto:kmelott@earlylearningventures.org)  
**Veronica Ibarra**, *Child Care Partnerships Coordinator – Pueblo County*. [vibarra@earlylearningventures.org](mailto:vibarra@earlylearningventures.org)



## EARLY LEARNING VENTURES

18 Inverness Pl E.  
Englewood, CO 80112  
earlylearningventures.org  
(844) 293-2820



@ELVCARES  
@EarlyLearningVentures